



New Hampshire Housing
Bringing You Home



WORKFORCE
HOUSING COALITION

— OF THE GREATER SEACOAST —

Opening Doors to Vibrant Communities



WORKFORCE
HOUSING COALITION

— OF THE GREATER SEACOAST —

Opening Doors to Vibrant Communities

McConnell Center, 61 Locust St, Room 302A, Dover, NH 03820

2014-2015
ANNUAL REPORT

**Board of
Directors**

Kim Rogers, President
President
G.L. Rogers and
Company, Inc.



Thomas A. House, Vice President
Principal, T.H.A. Architects L.L.C.

Matthew Sullivan, Secretary
Regional Planner
Strafford Regional Planning Commission



Kenn Ortmann
Retired Community
Development Professional

Sarah Hourihane
LEED AP
Project Manager
DeStefano Architects



Ralph Pope
Sales Associate,
Coldwell Banker Residential
Brokerage

TMS Architects
Town of York (ME)
Unitil Corporation
University Of Maine
Wonderland Thrift

(\$50 - \$99)
Harris Appraisal Services
Rolling Green Nursery

Individual Donors

Catalyst (\$151+)
Kenn Ortmann
Peter J Lane
Kim Rogers
Cliff Sinnott
Sarah Hourihane
M Christine Dwyer
Stephanye Schuyler

Champion (\$75-\$150)
David Choate, III
Walter & Carolyn Beaulieu
Tony Merlo
Robert Louttit
Ralph Pope
Cheryl Lee Gilbert

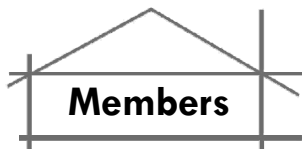
Advocate (\$50-\$74)
Don & Mary Jo Briselden
Paul McEachern
Paul & Lisa Henderson
Jonathan Ring
Matthew Sullivan
Cynthia Fenneman

Friend (up to \$49)
Steve Burns
Ms. Kristen Whiting-Grant
Anne Rugg
David Watters
Peter Whitman

In-kind Donors

Café at Stratham Village
Market
Dunkin Donuts
Formichelli's Pizzeria
e Ristorante
Hannaford Supermarket
Hauch Storage
Kittery Community Center
Lindt & Sprungli
Maine Sea Grant/University
of Maine Cooperative
Extension
Shaw's Supermarket
Sweet Dreams Bakery
T.H.A. Architects L.L.C.
York Housing

We sincerely apologize if you are not listed or are listed in error. Please notify us by email at info@seacoastwhc.org or by phone at (603) 205-0539. *Gifts recorded May 1st, 2014 through May 5th, 2015.



The Coalition offers a variety of corporate and individual membership levels and payment methods. We now have a new option giving new and renewing members an easy and secure way to support our efforts year-round. Make a "pledge" of financial support, through an online recurring monthly gift, to spread a larger donation out through the year. Learn more at: www.seacoastwhc.org/pledge.html.

Major Donors

NH Housing Finance Authority
United Way of the Greater Seacoast

Community Builders

(\$1,000 - up)
Chinburg Properties
Donahue Tucker & Ciandella
Federal Savings Bank
GL Rogers & Company Inc
Kennebunk Savings
Optima Bank & Trust

Organizational Donors

(\$250 - \$999)
Bank of New Hampshire
Northland Forest Products Inc
D F Richard Inc.
Selectwood Company

(\$100 - \$249)

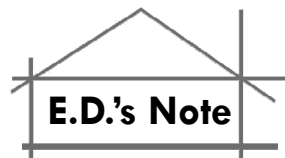
Ambit Engineering
Anagnost Companies
Castagna Consulting
Group LLC
Cheney Companies
City of Rochester (NH)
Destefano & Associates Inc

Estate of Stella A.
Ciborowski
Gayle Sanders Home Design
LLC
Gosselin Realty Group
Hawk Planning Resources LLC
The Housing Partnership
Landwright LLC
Lassel Architects
Manypenny Murphy
Architecture
Maxine Morse 2000 Trust
Mettee Associates
Paul McInnis Inc Auctioneer &
Appraiser
PK Surroundings
Rockingham Elec.
Supply Co., Inc.
Schoonmaker Architects
Signature Escrow & Title
Services, LLC
Strafford Regional Planning
Commission
THA Architects

Gayle Sanders
Owner, Gayle Sanders
Home Design L.L.C.



Cliff Sinnott
Executive Director,
Rockingham Planning Commission



Dear Volunteers, Members, and Supporters;

I came to the Coalition in late May 2013, and I have enjoyed my nearly two years of rewarding work as your Executive Director. The Coalition has an important mission that I care deeply about and it has been a great experience to work with volunteers and partners who are also committed to this mission. Together with the Coalition's Board of Directors and volunteers, we have made significant progress towards our mission, and have made improvements to the organization.

It is very bittersweet for me to leave the Coalition this May to live in Connecticut with my husband Michael, who is stationed at the Naval Submarine Base New London.

I have tremendous faith in our new Executive Director, in partnership with the Coalition's Board of Directors, and various committee members and volunteers to continue to make progress towards the Coalition's mission.

Thank you for all of your support!

Sincerely,

Ashlee Iber Amenti
Ashlee Iber Amenti



President's Message

Dear Coalition Members and Supporters,

The Coalition has had a productive year, advocating for more workforce housing in the Greater Seacoast. Our successes are only possible through strong partnerships between

our Executive Director Ashlee Iber Amenti, our Board of Directors, the Coalition's various committees, and the formation of our new Workforce Housing Advisory Committee.

The Coalition has:

- Organized and hosted a charrettes in York Maine and Stratham New Hampshire, examining the feasibility for the development of workforce housing in those communities, while incorporating public, municipal, and property owner participation;
- Completed our "Getting Ahead of the Curve" Video Training modules and discussion guide, including a video premiere event and train the trainers event.
- Revised our Housing Resource Guide, 28 pages of information and resources to help find and keep a home;
- Connected new developers and land owners with industry experts;
- Engaged young adults in discussions about housing and issues impacting their communities that lead to the creation of the new nonprofit organization, The 603 Initiative;
- Created a Workforce Housing Advisory to provide programmatic guidance to our Board of Directors;
- Launched a Community Liaisons program to be better connected with our communities throughout the Seacoast
- Started work on charrettes in Barrington, NH and Berwick, ME to be held in October 2015.



Since our inception in 2001, 25 Greater Seacoast communities have adopted workforce housing ordinances and over 550 housing units have been built, with additional units under construction.

Your past and future support is much appreciated. If you are not a member, please take a moment to support a diversity of homes available in the Seacoast area by joining the Workforce Housing Coalition.

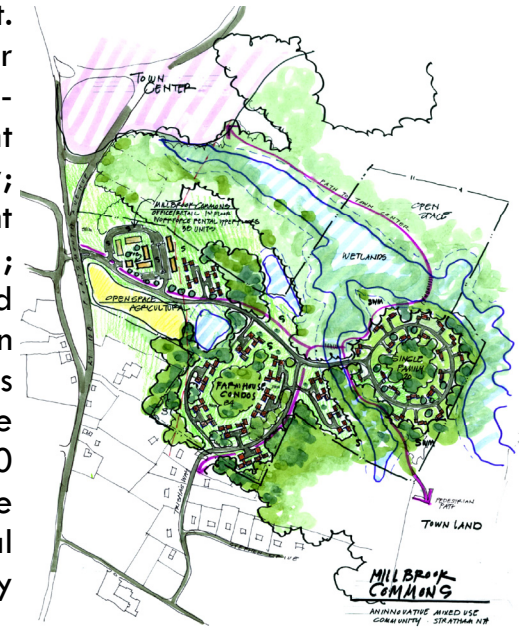
Sincerely,

Kim S. Rogers, Board President

Kennebunk Savings Bank Design Charrette in Stratham

A second Annual Design Charrette was completed in the town of Stratham, NH just a few

days later and culminated in a design reveal on October 24, 2014. The project featured a lot of the same processes involving two sites located off Route 108/Portsmouth Avenue, which serves as the major artery through the Town's business and commercial districts. Charrette team members were unpaid volunteers, who contributed an average of 14 hours, plus travel time, to the Stratham charrette process. This amounted to over 335 volunteer hours of professional talent and time put into the project. Resulting concept designs for both sites included mixed-income housing; different architectural styles; quality; green space; retail, restaurant and gathering space; maintain rural character; and sustainability. The design turned these considerations into the potential for the development of over 100 mixed-use buildings while maintaining the residential character, scale, and quality of the existing community.



Charrette Sponsors:

Town of **Stratham, New Hampshire** Incorporated 1716



**Maine Community Foundation
Design Charrette in York**

This year our 5th Annual Design Charrette produced conceptual designs for the development of two subject

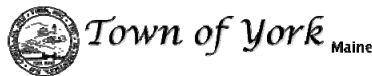
sites in the community of York Maine that incorporated workforce housing opportunities. Held over a two-day period, the process included a site walk, listening session, and design workshop, culminating in a design reveal on October 17, 2014. The subject sites include five properties under private ownership and produced conceptual designs for the



development of workforce housing opportunities on the subject sites located in the U.S. Route 1 and Vacation Drive vicinity of York, Maine. Nearly 40 volunteers made the charrette possible, by contributing an average of 12 hours each, plus travel time, to the project. This amounted to nearly 300 hours of professional time and talent put into the

project. Resulting concept designs for both sites included mixed-use development, preservation or creation of natural areas, retention of local architectural styles, walkability and traffic calming. The designs brought to light the potential for the development of dozens of townhouses, duplexes, and apartment buildings in the area.

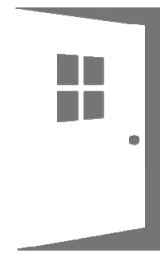
Charrette Sponsors:



Mission Statement

Our mission is to be a catalyst for the development of a range homes affordable for the diverse workforce in the Greater Seacoast region of New Hampshire and Maine. We build support for workforce housing by educating municipal officials, developers and community members.

We envision an adequate supply of affordable, desirable homes throughout the Greater Seacoast region that provide opportunities for the workforce to put down roots, and creates a more diverse community that benefits us all. We are *Opening Doors to Vibrant Communities*.



WORKFORCE HOUSING COALITION
OF THE GREATER SEACOAST

Major Funders

We are sincerely grateful to our major organizational funders for their enduring belief in our mission to educate the community on housing and our vision of an adequate supply of affordable, desirable housing throughout the Greater Seacoast region.

Thank you for your generous support!



New Hampshire Housing
Bringing You Home



The 603 Initiative

The Coalition helped to launch the 603 Initiative in 2014. The roundtable discussions we started with going professionals in 2014 spurred the creation of the 603 Initiative, a new nonprofit organization. Their mission is to engage and advocate for young Granite Staters to shape the future of New Hampshire and its communities.



Community Builders

In 2013, the Coalition initiated a program for corporate donors where we invited local businesses to join a distinguished group of supporters known as 'Community Builders'.

The program has served as a means to showcase members of the Seacoast community who make a significant commitment to support and promote the development of a balanced supply of housing for area workers. For an annual gift of \$1,000,00 contributors gain access to an array of valuable marketing opportunities, in addition to all the benefits of a Coalition corporate membership. We greatly appreciate our current program participants, who have each contributed \$1,000.00 in the past 12 months. We have openings for companies to join our group of Community Builders!



Video Training Modules

In 2012, over 50 Planning Board members and other interested individuals attended the videotaped WHC training entitled "Getting Ahead of the Curve: Anticipating Workforce Housing Proposals." Since then, we have partnered with Jay Childs and JBC Communications to edit the taped footage, tape additional footage and convert into video training modules. The videos can be viewed on our YouTube page or our website at ww.seacoastwhc.org/ links. Please let us know if you would like to bring a showing of the modules to your community!

Modules Sponsors:



New Hampshire Housing
Bringing You Home



Workforce Housing Advisory Committee

We believe, in the Seacoast Region's unique housing environment, it is vital for the Coalition to be aware of merging opportunities to support and advocate for a more diverse range of homes for the area's workforce.

The Coalition recruited individuals who have knowledge, experience and/or interest in workforce housing and related topics to join this committee. This group has met quarterly for the past year and has contributed excellent ideas for how to reach our vision, partnership opportunities and much more. The current members of the advisory committee include:

Sandra Beaudry, Crossroads House
Kristen Grant, Maine Sea Grant & UMaine Cooperative Extension
George Reagan, New Hampshire Housing Finance Authority
Christopher Parker, City of Dover
Jeff Kisiel, Portsmouth Forward
John Chagnon, Ambit Engineering
Patricia Martine, York Housing
Debra Scott, Federal Savings Bank
Robin LeBlanc, PLAN NH
Rebecca Perkins, Enel Green Power
Thomas House, THA Architects
Carrie DiGeorge, Kennebunk Savings
Peter Whitman, Keller Williams Commercial Division
Leo Gagnon, Keller Williams Coastal Realty

